

# Auditing risk based inspections regarding waste shipments by the Dutch customs



Louise van Loon

Netherlands Court of Audit (NCA)



## Content

- 1. Audit on Dutch waste shipment enforcement (2010)**
- 2. Role environmental inspectorate and customs (including audit standards and findings)**
- 3. Risk based inspection by the Dutch Customs (including audit standards and findings)**
- 4. Questions and discussion**

# 1. Exploratory audit in the Netherlands

## Focus

The enforcement of the EU waste shipment regulation in the port of Rotterdam

> Organisation and partly practice

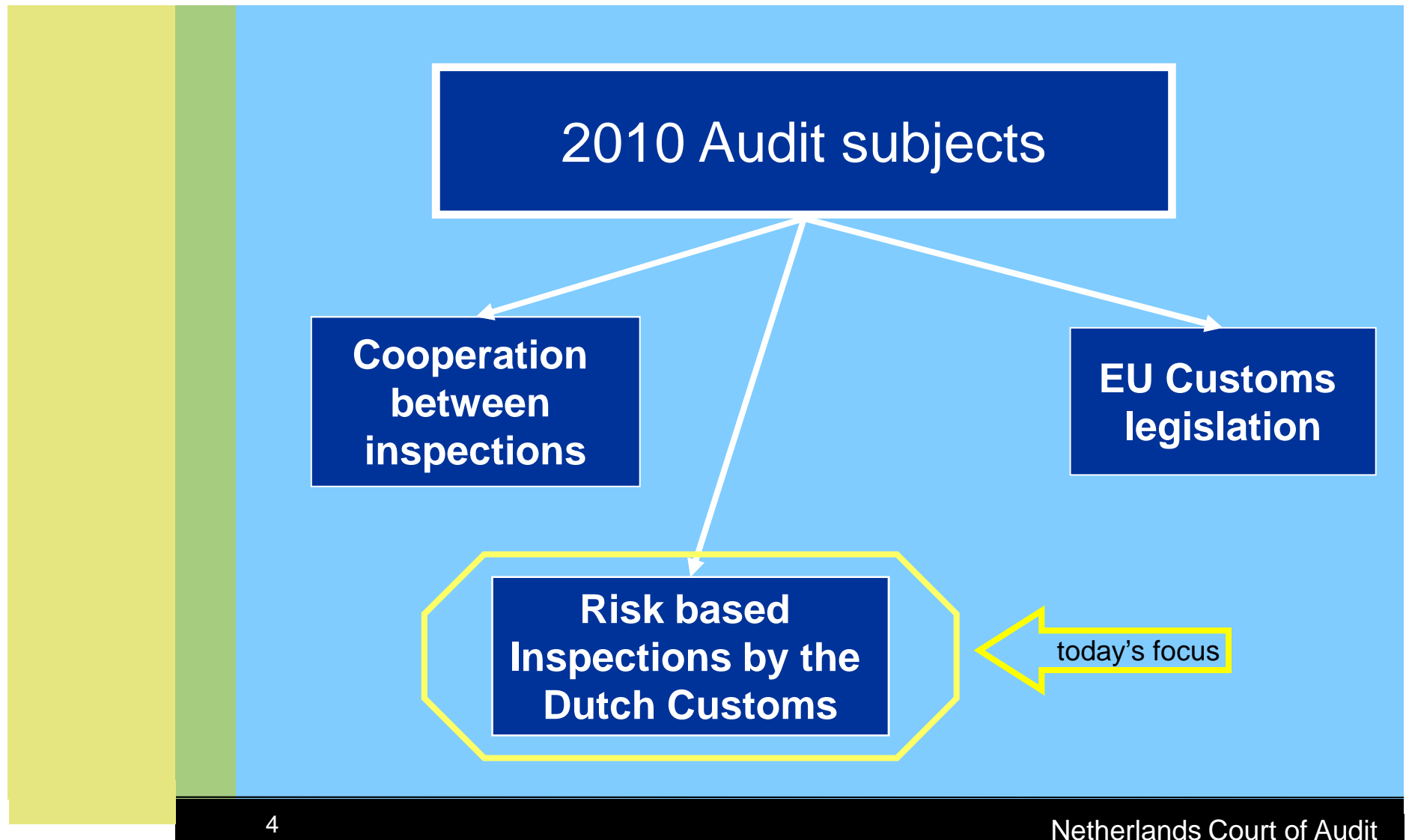


## Method

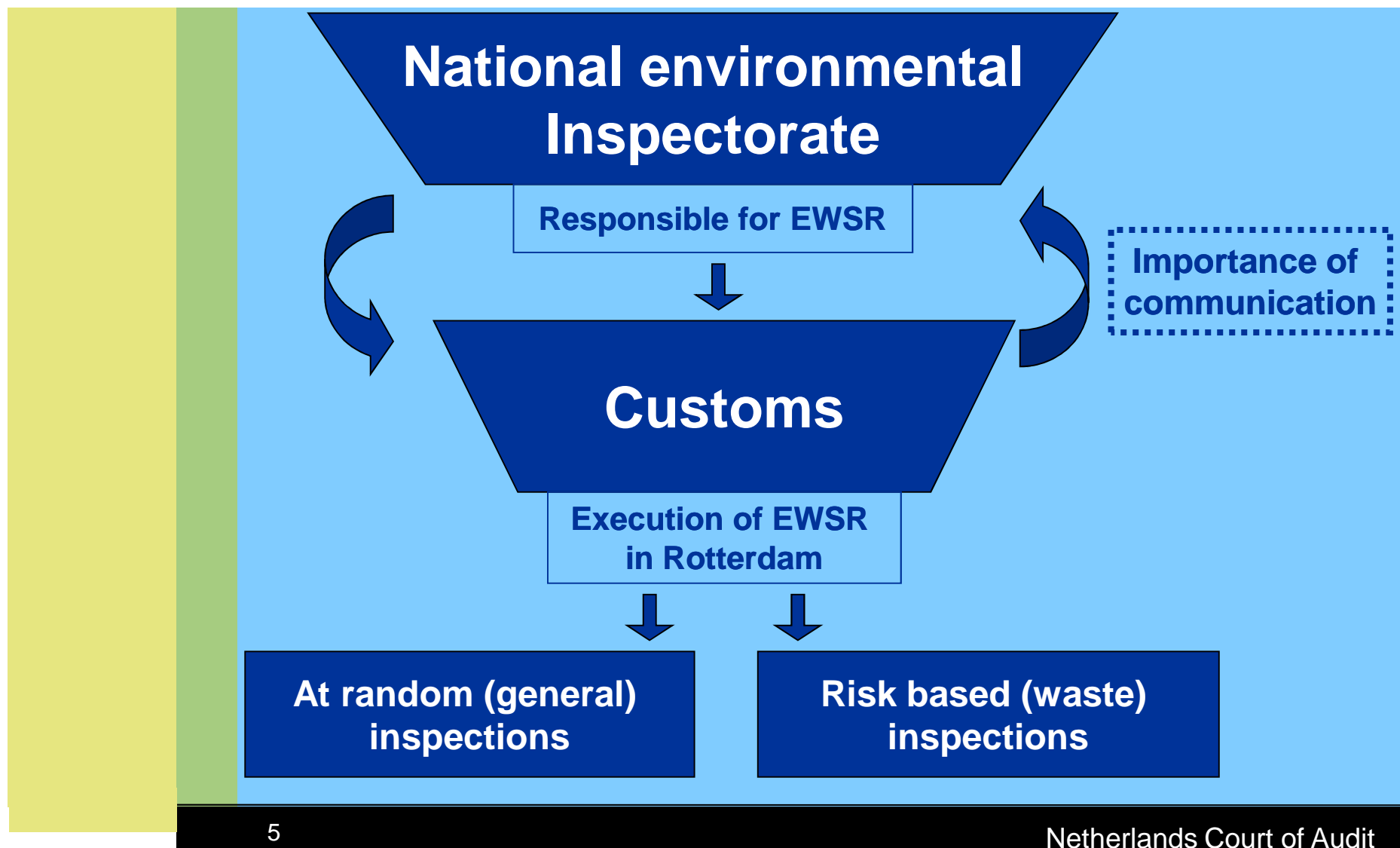
- Document study (MoU's, policy documents)
- Interviews (in the Netherlands and Brussels)



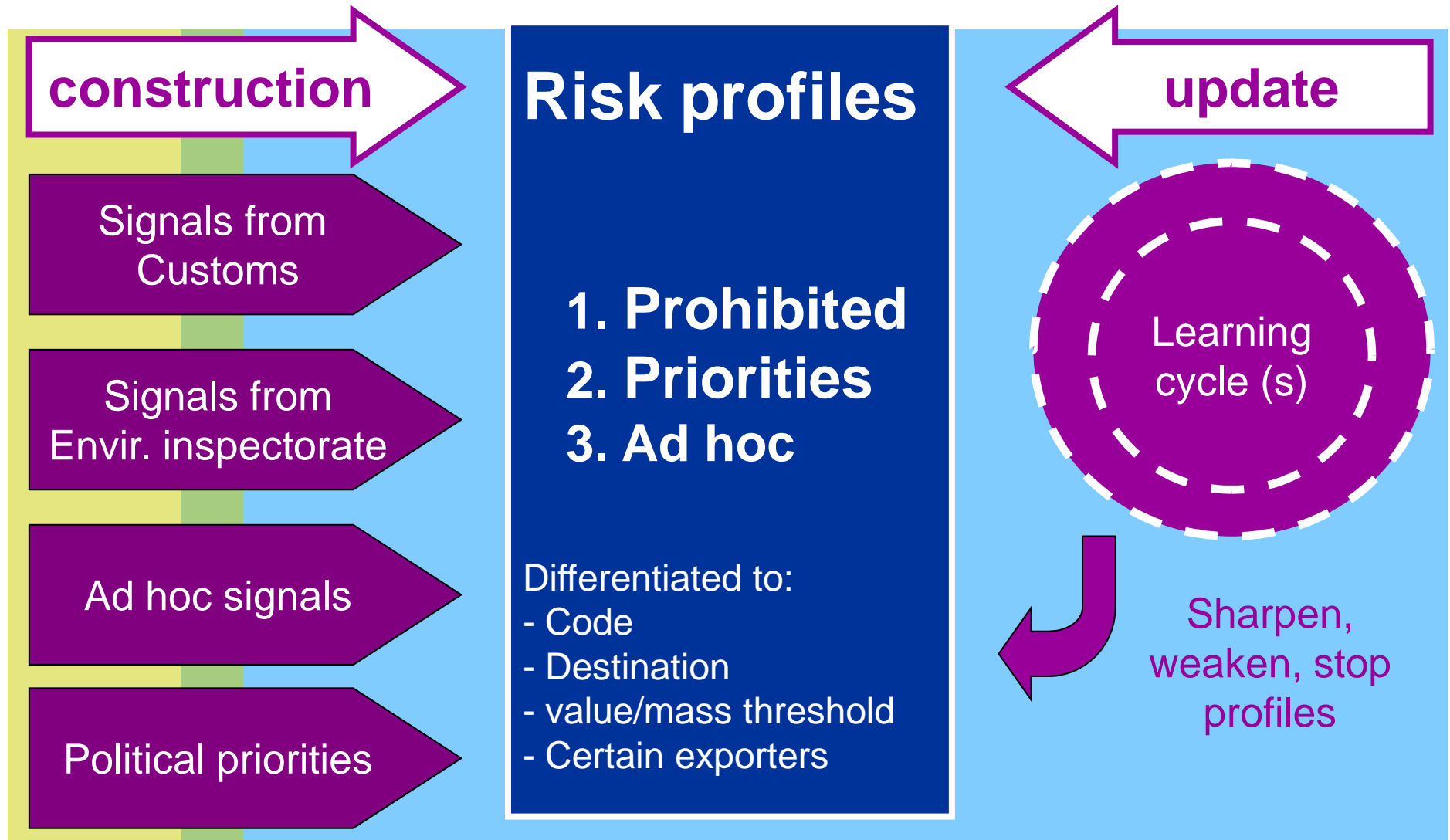
# 1. Exploratory audit in the Netherlands



## 2. Role environmental inspectorate and customs + audit standards & findings



### 3. Risk based inspection by Dutch customs + audit standards & findings





## 4. Questions and discussion

> **Questions?**

> **Discussion**

→ What are your experiences with (auditing) risk based inspections?

→ What is your opinion of the <random versus risk-based> and <administrative versus physical> inspection ratio? What would be required or desired?



**Thank you for your attention!**

For more information, also about the Coordinated audit on the shipment of waste, contact Jan Willem van de Wardt

[j.vandewardt@rekenkamer.nl](mailto:j.vandewardt@rekenkamer.nl)

